

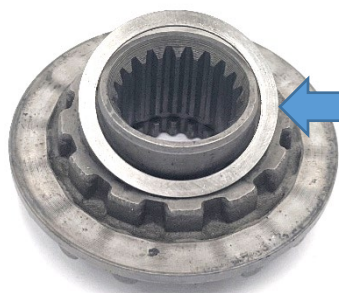


INSTALLATION MANUAL SUPPLEMENT TL-TRX300

In addition to your Standard Installation Manual, please review these supplemental instructions for your TORQ Locker install.

1.) Differential Disassembly – What parts to remove and what parts to keep:

- The Honda Differential has limited slip clutches to remove and spider gear thrust washers to keep and reuse with the TORQ Locker.
- The Thrust Washer is located on the back side of the drive spider gear. Remove the washer and save it for reuse.
- Remove the Clutches and Spider gears. These items will not be reused with the TORQ Locker.

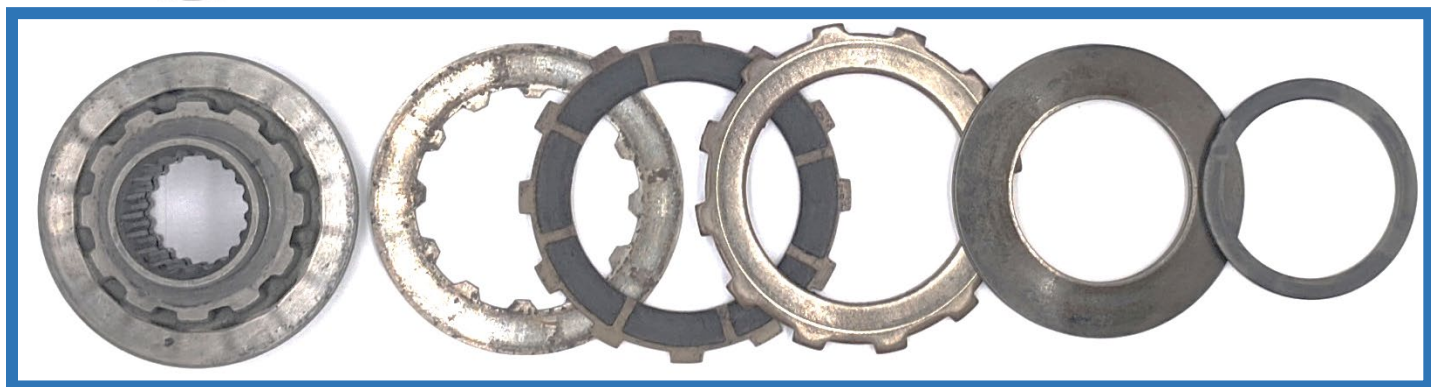


- Remove the Thrust Washer from the spider gear for reuse.



Save for Reuse

Remove



- Proceed with the Standard TORQ Installation manual. Email us with any questions.

TORQ Locker™ is 100% made in the USA.

Please direct any questions to: info@torqmasters.com

March 1st, 2020 Copyright by Torq-Masters Industries Inc.

TORQ Locker is a trademark of Torq-Masters Industries Inc.